

AC-40 TRUCK WASH

Non caustic, heavy duty truck wash
Biodegradable and streak free

Use - AC-40 is used widely in transport, marine and industrial applications due to the many high performance characteristics of the product.

PRODUCT INFORMATION

AC40 truck wash is a concentrated water based high performance and **non-caustic** truck wash. This product effectively removes road grime and dirt from all surfaces including plastic, rubber, chrome, aluminium and paintwork.

AC40 truck wash is bio-degradable and free rinsing. It is suitable for gurney's and automated washing systems.

This product was specifically developed not to streak and is suitable for use on side curtains of trailers and all fabrics found in the transport and marine environments.

AC40 is primarily used to wash trucks, trailers, cars, boats, coaches and mining equipment. It has also proves very effective as a floor cleaner and laundry cleaner (especially on greasy clothing).

This product contains corrosion inhibitors to protect surface from rusting and does not contain caustic chemicals. It leaves paintwork shiny and streak free when used as directed.

This product is economical to use and can be used across a broad range of dilution to control performance and cost.



TYPICAL PROPERTIES

Appearance:	Light Blue Liquid
Odour:	Very Slight Odour
pH: (Concentrate)	7.3—7.7
Flammable:	Non flammable
Melting Point:	-4°C
Boiling Point:	121°C
Solubility:	Soluble
ADG Code:	Non Dangerous
Specific Gravity:	1.075

PRODUCT CODES / QUANTITIES

A/AC40/5	5L Plastic (Carton of 4) (48 Cartons per pallet)
A/AC40/20	20L Plastic Drum (48 Cubes per pallet)
A/AC40/200	200L Metal Drum (4 drums per pallet)
A/AC40/1000	1,000L IBC

AC-40 TRUCK WASH

Non caustic, heavy duty truck wash

Biodegradable and streak free

BIODEGRADABILITY OF AC-40 TRUCK WASH

The primary ingredient of interest in the biodegradability of many traditionally formulated surfactants is linear alkylbenzene sulphonate ('LAS'). LAS 'Primary Biodegradation' is the transformation induced by microorganisms with formation of sulphophenyl carboxylates (SPCs) as biodegradation intermediates. This biodegradation stage corresponds to the disappearance of the parent molecule and the loss of interfacial activity as well as the toxicity to aquatic organisms.

OECD Tests on LAS Biodegradability are as follows;

Ready Test: OECD 301 B,D,E - Result >99% primary biodegradability

Inherent Test: OECD 302 A,B - 95 - 98% Result Readily Biodegradable

Ready Biodegradability TEST (GLP protocol)	Degradation at the end of 10 days window	Degradation at the end of test
OECD 301-A "DOC Die Away test"	83%	84%
OECD 301-B "CO2 Evolution test"	75%	89%

The following are considered by the European agencies AISE and CESIO as possessing good biodegradability characteristics;

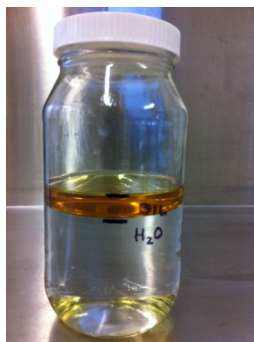
- Sulphated anionic surfactants (alkyl sulphates, alcohol ethoxysulphates) :well biodegradable
- Fatty acids and soaps : well biodegradable
- Alcohol ethoxylates : well biodegradable
- Sugar-based surfactants (alkyl polyglucosides, glucamides) : well biodegradable
- Alkyldimethyl amine oxides : well biodegradable (based on limited data).

Note: as STPP is an inorganic substance biodegradation studies are not applicable.

QUICK BREAK CHARACTERISTICS OF AC-40 TRUCK WASH

1. Half fill a jar with clean water and mark the top of the waterline.
2. Draw another line 1cm above the waterline mark, and fill to this line with SN300 oil.
3. Add 10mL of AC-40 Truck Wash to the jar, put on the lid and shake vigorously.
4. Set jar aside, and allow 10 minutes for the oily water to settle. If, after 10 minutes, the oily water emulsion has separated back into its respective lines of clear water and 'free' oil, your cleaning agent is quick-breaking. If the liquids remain emulsified and have a white, cloudy appearance then the chemical does not possess quick-break properties.

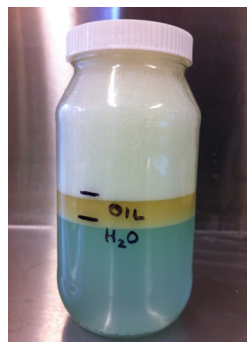
Before Addition of TW



After Emulsification



After 10 Minutes



Conclusion:

Based on the above test we conclude that the AC-40 Truck Wash is a Quick Breaking Detergent.